

SPECIFICATIONS

		KTS-472R10L	KTS-472R6L
Distance Measurement			
Max.Range	Single prism	5.0km	
	Reflectorless	1000m	600m
	Reflector	1.0km	
※Object in shade, or sky overcast			
Accuracy	Reflectorless	Fine	$\pm(3+2\text{ppm}\times D)$ mm
	Reflector	Fine	$\pm(2+2\text{ppm}\times D)$ mm
		IR sheet	
Reading	Max:99999999.9999m Min:0.1mm		
Measuring Time	Reflectorless	Fine Mode: 0.3s; Tracking Mode: 0.1s	
Atmospheric Correction	Manual Input, Auto Correction		
Prism Constant	Manual Input, Auto Correction		
Temperature Sensor	Freecale Sensor		
Angle Measurement			
Measuring Method	Absolute Continuous		
Dia. of Encoder Disk	79mm		
Minimum Reading	0.1"		
Accuracy	2" / 5"		
Detection Method	Horizontal: Dual, Vertical: Dual		
OS and Hardware platform			
Operate System	Windows CE 6.0		
Display	3.5 inch. 640x480 Highlighted Touch Screen		
Data Communication	RS232, Mini USB, SD Card		
Processor	Intel PXA310 806MHZ		
Memory	128M DDR, 512M NAND Flash		
Bluetooth	30M range. Class 2, V2.0+EDR		
WiFi	Yes		
Power Control Processor	Auto Adjust Voltage and Frequency, Save energy		
Telescope			
Image	Erect		
Tube Length	154mm		
Effective Aperture	45mm,(EDM:50mm)		
Magnification	30x		
Field of View	1° 30'		
Minimum Focus Distance	1m		
Resolving Power	3"		
Auto Compensator			
System	Dual Axis Liquid-electric		
Working Range	$\pm 3'$		
Accuracy	1"		
Vial			
Plate Vial	30" / 2mm		
Circular Vial	8/ 2mm		
Optical Plummet			
Image	Erect		
Magnification	3x		
Focusing Range	1m - ∞		
Field of View	5°		
On-Board Battery			
Type	Rechargeable Li-ion Battery		
Voltage	DC 6V		
Continuous Operation Time	10 hrs		
Others			
Temperature	-20 ~ +50°C		
Dimension and Weight	200x190x350mm, 6.0kg		
Plummet	Optical or Laser Plummet Optional		

STANDARD CONFIGURATION



1. Mainframe 1x
2. Rechargeable Battery 2x
3. Battery Charger 1x
4. Communication Cable 1x
5. Mini USB Cable 1x
6. SD Card 1x
7. Tools Kit 1x
8. Dryer 1x
9. Plummet 1x
10. Carrying Case 1x
11. Operation Manual 1x
12. Warranty Card 1x
13. QC Pass Certificate 1x
14. Rain Cover 1x
15. Belt for Case 2x

Battery and Charger



EU/US/JP/UK/UL Type chargers available

COMPATIBLE ACCESSORIES



Solar Filter
KF-20

Diagonal Eyepiece
KDE20



KOLIDA
Professional's Choice

*Smaller Size
Increased Performance*



KTS-472R10L SERIES
WinCE TOTAL STATION

KOLIDA
Professional's Choice

GUANGDONG KOLIDA INSTRUMENT CO., LTD.

Add: 7/F, South Geo-information Industrial Park, No.39 Si Cheng Road, Tian He IBD, Guangzhou 510663, China
Tel: +86-20-22139033 Fax: +86-20-22139032
Email: export@kolidainstrument.com http://www.kolidainstrument.com

KTS-472R10L WinCE Total Stations

KOLIDA's new 470 Series Total stations New Advanced Design with Improved Technology

KTS-472R10L is designed to deliver the latest technology to surveyors worldwide, you will appreciate the technical improvement and advantages from the beginning of working with this equipment.

Featuring an ultra-powerful EDM, the KTS-472R10L is able to measure up to 1000m without reflector at an incredible 3mm+2ppm accuracy, and in prism mode it is able to measure up to 5,000m with single prism.

Measurements are captured faster than ever: 0.1 second in tracking mode and 0.3 second in fine mode. The bright red laser dot pinpoints are also featured.

New Touch Screen and New Program

The 3.5 inch touch screen makes operation much easier. Its 640* 480 high resolution with true color highlighted quality highly improves the visibility under sunshine, and backlight function also provides more continence for night operation.

KOLIDA developed Mapping Genius and Engineering Genius as free mapping software for KTS-472R10L. Its Windows CE 6.0 operation system also supports Carlson SurvCE, MicroSurvey Field Genius and other third party software to provide a complete field-to-office solution for various demands of survey works.



Ultra-Powerful, Advanced EDM

- ~ 1000m Non-prism range
- ~ 5000m prism range
- ~ 0.1-0.3 second measurement time
- ~ Coaxial red laser pointer
- ~ Improved performance under foggy condition



Various Communication Interface

- ~ Up to 32GB SD card storage
- ~ Mini USB port
- ~ RS-232 serial port
- ~ Environmentally protected



Windows CE 6.0 operation system

- ~ KOLIDA Mapping Genius
- ~ KOLIDA Engineering Genius
- ~ Carlson SurvCE (optional)
- ~ MicroSurvey Field Genius (optional)



Rugged, Waterproof Design

- ~ Waterproof/ dust proof IP55 protection
- ~ Atmosphere/ Temperature sensor
- ~ Stable angle accuracy
- ~ Alphanumeric keyboard with backlight

New Functionalities

Bluetooth

Bluetooth communication is available for KTS-472R10L. By the Bluetooth wireless link, you can easily connect your data collector with total station without cable. This technology brings total flexibility to you field operation.



WIFI

KTS-472R10L is equipped with WIFI module, and support WIFI function. You can easily surf the Internet and communicate with other mobile phones or computers with WIFI .

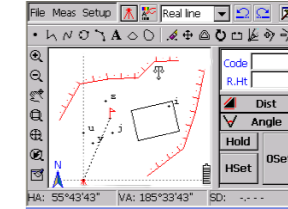


1000m Reflectless	Ultra Low-noise Amplifier	Carrier Frequency	Noise Phase Analysis	HD Display	Co-axial Laser Beam	Ultra Fast Measurement	Dual Compensation	T/P Sensor
4-probe Encoding	IP55	Windows CE 6.0	Laser Plummet	Laser Pointing	Wireless Transfer	Bluetooth Link	SD Storage	USB Interface

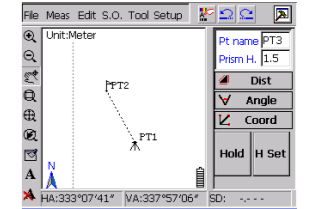
Abundant Software

Mapping Genius

Mapping Genius is an integrated software for field data collection and mapping. With the advantages of laptop, data collector, PDA, it realizes the integration of indoor and outdoor works.



Mapping Genius



Engineering Genius

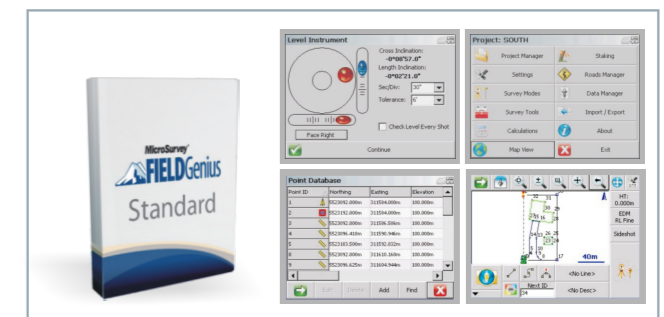
Engineering Genius

Engineering Genius is especially designed for construction measurement works. It brings user data collection/ calculation and mapping programs which can be applied in various works.

Carlson SurvCE (Optional)



MicroSurvey FieldGenius (Optional)



Comparison of KTS Series Total Stations

	442LLC	442R6LC	462R10L	472R10L
Laser Type	Infrared Laser	Visible Laser		
Range	5,000m by 1 prism	600m non-prism 5000m by 1 prism	1000m non-prism 5000m by 1 prism	
Laser Pointer	N/A	Yes		
Operation System	DOS			Windows CE 6.0
Built-in Memory	2MB (24000 points)		4MB (48000 points)	128MB DDR 512MB NandFlash
SD Card	Up to 32GB			
Atmosphere/ Temperature Correction	Manual		Automatic	
Bluetooth	N/A		Optional	Yes
Battery	2700mAH		3100mAH	